

# **dtSearch Web**

# **dtSearch Publish**

**Version 7**

**Manual**

**Copyright 1991-2018 dtSearch Corp. [www.dtsearch.com](http://www.dtsearch.com)**

**SALES**

1-800-483-4637

(301) 263-0731

Fax (301) 263-0781

[sales@dtsearch.com](mailto:sales@dtsearch.com)

**TECHNICAL**

(301) 263-0731

[tech@dtsearch.com](mailto:tech@dtsearch.com)



# Table of Contents

<b>1. dtSearch Web quick start</b>	<b>1</b>
<b>2. Customizing the Search Interface</b>	<b>4</b>
Form Builder	4
Search controls	5
Selecting indexes to include	6
Search results format	7
Modifying a search results item	9
Document display options	10
Logging	10
<b>3. Portable Media Publishing</b>	<b>13</b>
Publishing (Overview)	13
Using the CD Wizard	13
CD types	15
Standard CDs	15
Local HTTP Server CDs	19
Software dependencies	20
cdrun.xml	21



# dtSearch Web quick start

dtSearch Web is a search engine that you can install on a web server to publish documents on your web site or to search remote web-based content. It can perform fast indexed searches using the same search features that dtSearch Desktop/Network supports -- fuzzy searching, phonic searching, natural language searching, boolean logic, proximity, etc. Indexed documents can be in any format that dtSearch supports.

After a search, dtSearch Web will convert documents as needed to HTML for display, with hits highlighted. If a retrieved document is already in HTML, dtSearch Web will display it with hits highlighted while preserving the HTML attributes (so links and images will work in your browser). PDF files will appear in Adobe Reader with hits highlighted. (Highlighting hits in PDF files is done using an Adobe Reader plug-in, which is available for download from this page: <http://download.dtsearch.com/pdfhl/>)

dtSearch Web requires Microsoft Internet Information Server (IIS).

This Quick Start will describe how to get a basic search form running on your web site quickly. You can create any number of search forms, each with its own set of option settings and index selections. For information on setting up dtSearch Web to run from a CD, DVD, or other portable media, see CD Publishing (Overview).

## **1. Install the dtSearch and dtSearch Web program files on your web server.**

### **2. Build an index of your documents**

dtSearch Web uses the same indexes as dtSearch Desktop/Network, so if you already have a dtSearch index of the documents, you can use this index with dtSearch Web. If not, follow the dtSearch Desktop/Network Quick Start to set up an index.

If your site includes dynamically-generated content rather than static content such as HTML and PDF files, or if you are searching content on other web sites, you can use the dtSearch Spider to index it.

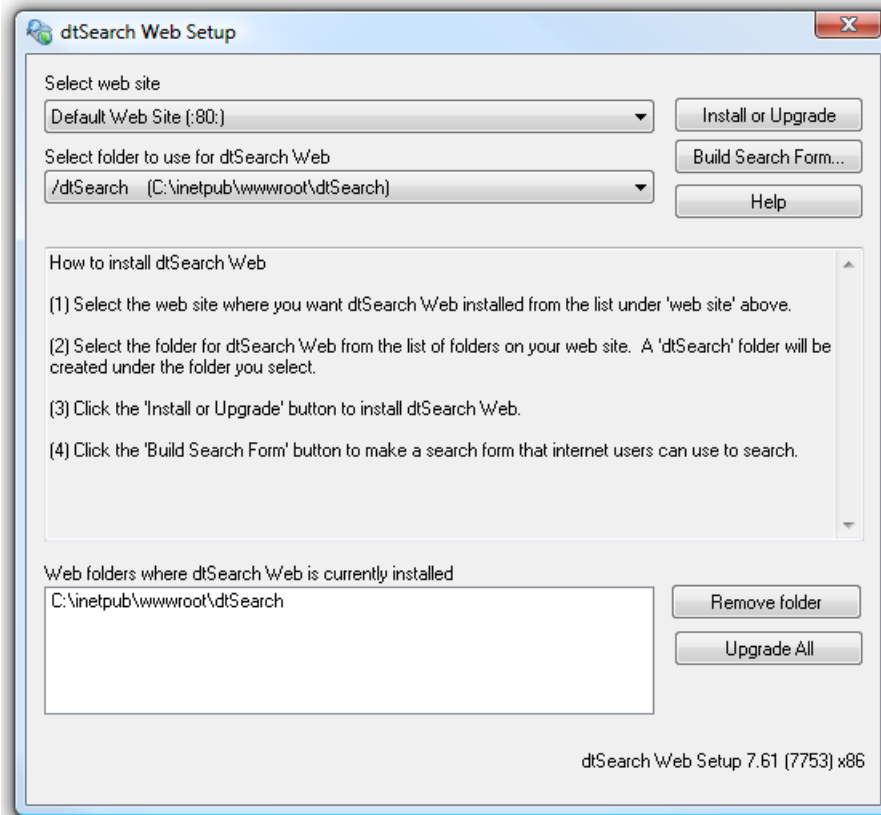
Note: When creating indexes to use with dtSearch Web, enable both the "Cache text" and "Cache original documents" options to ensure that search results and highlighted documents appear quickly.

### **3. Make a virtual directory for your documents**

Designate each folder that contains documents to be published as a virtual directory.

#### 4. Run dtSearch Web Setup

In dtSearch, click **File > dtSearch Web Setup**. dtSearch Web Setup will display a drop-down list of the web sites on your server, and below it a list of the virtual directories defined for each site.



#### 5. Select the web site to use with dtSearch Web

If you have more than one web site on this server, you can install dtSearch Web on each of them, or just one. (To install dtSearch Web on additional web sites, repeat the procedure described in this Quick Start for each site.)

#### 6. Select the folder where dtSearch Web should be installed

dtSearch Web Setup will create a "dtSearch" folder under the folder you select where the dtSearch Web files will be installed. Click the **Install or Upgrade** button to install the dtSearch Web files in the folder you selected.

If the folder you selected does not already have 'Execute' permission enabled, dtSearch Web Setup will ask if it can enable 'Execute' permission in the folder so dtSearch Web can run from that folder.

**7. Build a Search Form for your site**

Click the **Build Search Form...** button to build a search form to use with your site. You can make as many search forms as you want for each site. After dtSearch Web Setup has generated a search form, you can use an HTML editor to edit the form to fit into your web site.

dtSearch Web provides several alternative templates you can use to create your search form. For each form you create, select a template from the **Template** drop-down list to specify the type of form to generate. Examples of each type of template are available at <http://support.dtsearch.com/support/forms>.

In the **Form Builder** dialog box, click the **Indexes** tab to select indexes for the search form. Check the box next to each index to include it on your search form.

**8. Click OK to build the search form.**

After the search form is built, dtSearch Web will open it in your browser so you can try out a search. Once you have a basic search form working, you can run **Form Builder** again to customize the search form, the appearance of search results, and other options.

**Logging**

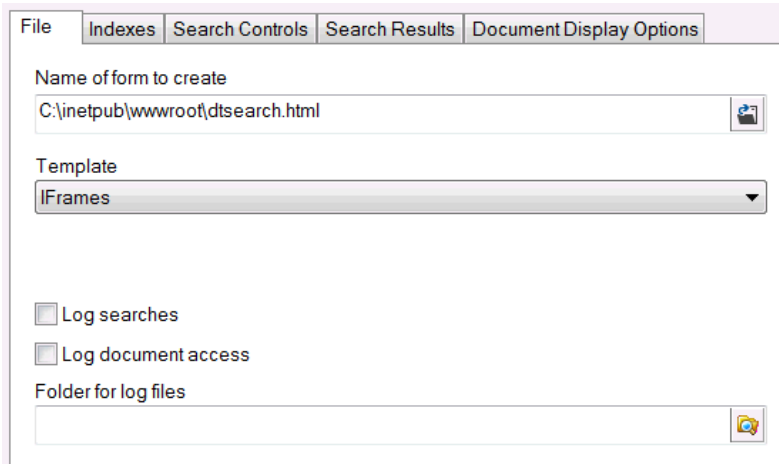
To enable logging in dtSearch Web, check the **Log document access** or **Log searches** checkboxes in the **File** tab of the **Form Builder** dialog box. For information, see Logging.

# Customizing the Search Interface

## Form Builder

---

Click the **Build Search Form...** button in dtSearch Web Setup to build a search form to use with your site. You can make as many search forms as you want for each site. After dtSearch Web Setup has generated a search form, you can use an HTML editor to edit the form to fit into your web site.



The screenshot shows the 'Form Builder' interface with the 'File' tab active. The 'Name of form to create' text box contains the path 'C:\inetpub\wwwroot\dtsearch.html'. Below it, the 'Template' dropdown menu is set to 'IFrames'. There are two checkboxes: 'Log searches' and 'Log document access', both of which are unchecked. At the bottom, there is a 'Folder for log files' text box which is currently empty.

Under the **File** tab of the **Form Builder**, you can select the name and location of the search form to create. When you create a search form, Form Builder will generate a set of files containing JavaScript, CSS styles, help, and other components of the search form. For details on these files, see [Generated files](#). To avoid cluttering your other web site folders with these files, you may want to generate the form in its own subfolder of your web site. For example, if you generate the search form in `c:\inetpub\wwwroot\SearchForms\form1.html`, then the other generated files will also go in the `c:\inetpub\wwwroot\SearchForms` folder.

### Template

dtSearch Web provides several alternative templates you can use to create your search form. For each form you create, select a template from the **Template** drop-down list to specify the type of form to generate. Examples of each type of template are available at <http://support.dtsearch.com/support/forms>.

The following templates are included with dtSearch Web:

**IFrames.** The IFrames template is a search form with one IFrame for search results and a second IFrame for retrieved documents.

**No Frames.** The No Frames template does not use frames or IFrames for anything. After a search, the search results will open in a new tab overlaying the search form, and when users click on retrieved documents, the documents will appear in another new tab overlaying the search results.

**Two Frames.** The Two Frames template uses two resizable frames, one for the search form and search results, and a second for retrieved documents.



**Three Frames.** The Three Frames template is similar to the Two Frames template, but it adds a separate frame for the button bar with the "Next Hit", "Prev Hit", etc. buttons. This template is most similar to the layout used in older versions of dtSearch Web.

### Logging

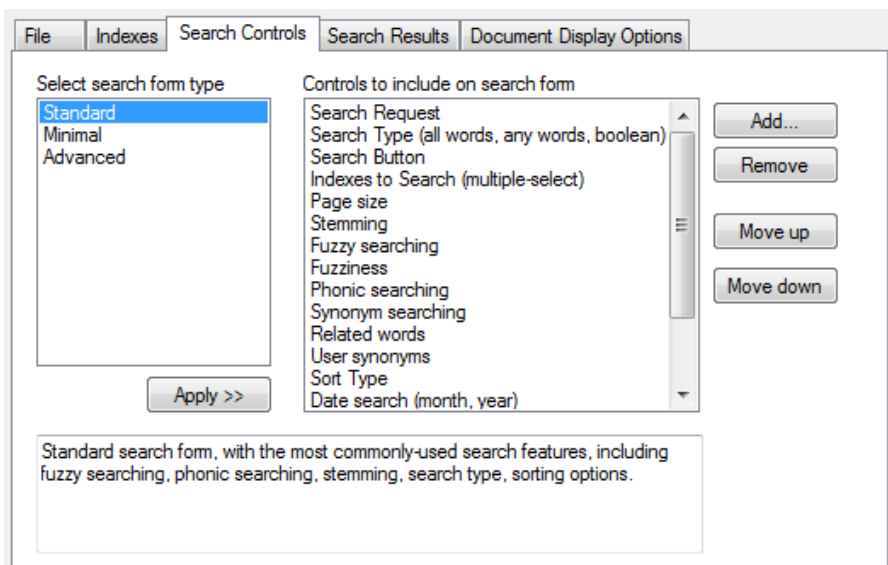
Check the **Log searches** and **Log document access** boxes to enable logging of searches from this search form. For more information on logging options, see **Logging**.

## Search controls

---

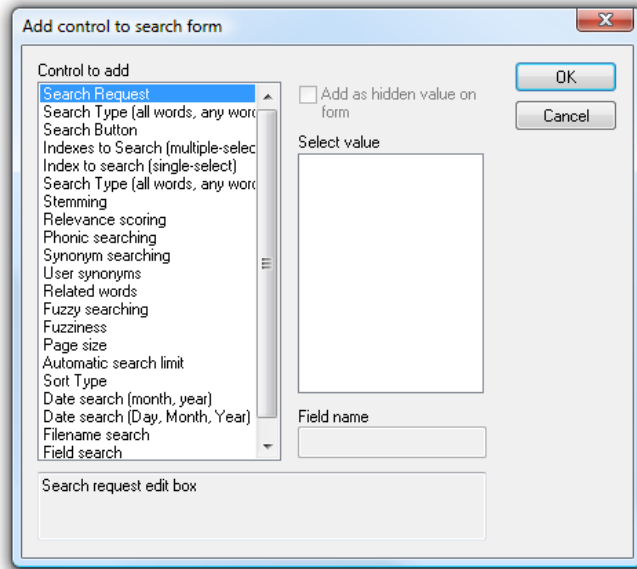
The **Search Controls** tab in the **Form Builder** lets you specify the contents of the search form that will be generated.

Once the form is generated, you can edit it using any HTML editor to match the rest of your web site.



Click a search form type under **Select search form type**, and click **Apply>>**, to set up one of the standard sets of search controls. Once you have done this, you can click **Add...** or **Remove** to add or remove specific controls. Use **Move up** and **Move down** to change the order of the controls on the search form.

## Adding a control



To add a control:

1. Select the type of control to add under **Control to add**.
2. To add a hidden control that specifies a default value, check the **Add as hidden value on form** box and select one of the listed values.

To add custom fields such as Subject or Author:

1. Select the **Field search** field type under **Control to add**.
2. Enter the name of the field under **Field name**.

## Selecting indexes to include

In the **Form Builder** dialog box, click the **Indexes** tab to select the indexes that you want to put on the search form. Check the box next to each index to include it on your search form.

When you check the box next to an index name, dtSearch will include that index in the list of indexes on the search form.

Check the box to **Encrypt index paths in search form** to have the search form use numeric codes instead of folder names to identify indexes in the search form.

## FindPlus® Integration

dtSearch FindPlus integration allows a dtSearch Desktop user to combine searches of local and network indexes with dtSearch Web searches through the dtSearch Desktop user interface. If some of your users will have dtSearch Desktop, check the box labelled **Make these indexes accessible to users through dtSearch Desktop** to allow these users to search directly from dtSearch Desktop. The search form generated will have a "Get index library" link added that these users can click on to integrate dtSearch Desktop with your site. Once a user has done this, the indexes listed on your search form will be added to the user's **Search** dialog box in dtSearch.

Please see the "Searching using dtSearch Web" topic in the dtSearch help file for more information.

## Search results format

The **Search Results** tab in the **Form Builder** lets you change the way dtSearch displays the results of a search.

### Items to include in search results list

Add or remove items that will appear in search results. To remove an item on the list, un-check the box next to it. Click the **Add...** button to add a new item. For each item, you can use **Modify...** to customize the way it appears in search results.

### Search results header

#### Search results footer

This is the HTML that appears at the top and bottom of the search results list. You can modify it to change the way search results appear. The header and footer can contain the following special codes:

Symbol	Meaning
%%Request%%	The search request that the user entered.
%%FileCount%%	The number of documents retrieved.
%%HitCount%%	In search results, the total number of hits in all files. For a document, the number of hits in the document.

### **Display the PDF Title as the filename for PDF files**

PDF files have a "Title" attribute that is usually more readable than the filename. Check this box to make the Title appear in search results instead of the filename.

### **Display the HTML <TITLE> as the filename for HTML files**

HTML files also have a title, included between <TITLE> and </TITLE> tags in the file, that is often more readable than the filename. Check this box to make the HTML title appear in search results instead of the filename for HTML files.

### **Remove scripts from HTML files when highlighting hits**

HTML files often contain JavaScript code that may not work properly when the file is displayed outside of its usual context. For example, the JavaScript may refer to documents or objects that would appear in another frame. Check this option to have dtSearch remove any JavaScript it finds in an HTML file when highlighting hits. (The original HTML file will be unaffected. This option only affects what dtSearch Web will display when highlighting hits in an HTML file returned after a search.)

### **Highlight hits in documents indexed using the Spider**

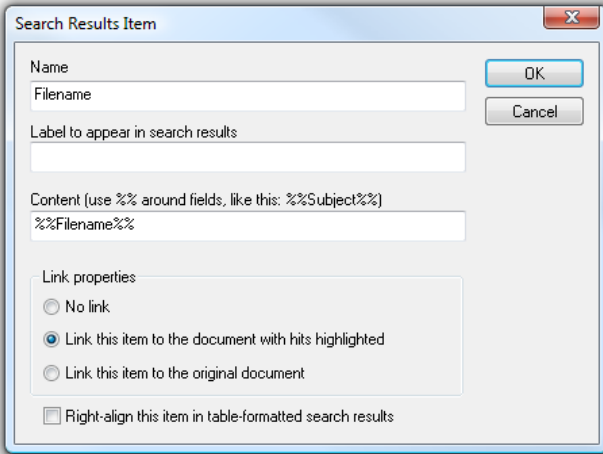
Check this box to enable highlighting of hits in documents that were indexed using the Spider. To make hit highlighting faster, create your index with the "Cache original documents" option enabled.

### **Use HTTP proxy**

When highlighting documents indexed using the Spider, dtSearch Web must download a local copy of the file (unless the index was created with caching of original documents enabled). Check the "Use HTTP Proxy" box, and supply the URL of the proxy server to use, if dtSearch Web should use a proxy server when downloading web pages.

## Modifying a search results item

When you click **Add...** or **Modify...** in the **Search Results** tab of the **Form Builder**, you can specify the content of an item to appear in search results.



### Name

The name of the item. This name is only used in the list of items in the **Search Results** tab and is not displayed in search results.

### Label to appear in search results

This label is any HTML that you want to appear in front of the item. For example `<B>Date:</B>` would put **Date:** in front of the field.

### Content

This is the information about the document that you want to appear in search results. The following pre-defined fields can be used:

String	Purpose
%%Hits%%	Hit count
%%Filename%%	Name of the retrieved document
%%Location%%	Path to the retrieved document
%%Date%%	Modification date of the document
%%Size%%	Size of the document
%%Synopsis%%	Brief segment of text showing the first few hits in context
%%Title%%	Text from the first few lines of the document, or the TITLE of an HTML document

Additionally, if you have stored user-defined fields in the index, you can insert these as well. For example, if you set up a stored field named "Subject", put `%%Subject%%` in the Content to insert the value of this field for each document.

### Link properties

Select the type of link to insert for this search results item, if any.

## Document display options

---

The **Document Display Options** tab in the **Form Builder** lets you specify how documents will appear in search results.

### Before hit

#### After hit

HTML that is used to mark hits.

### File types to display without conversion to HTML

List any file types that you want dtSearch Web to display without conversion to HTML. For example, if you want the Microsoft Word viewer plug-in to display .DOC files, add DOC to the list. PDF files are always displayed in Adobe Reader, without conversion to HTML.

### Highlight hits using multiple colors

By default, all hits are highlighted using a yellow background. Check this box to have dtSearch Web highlight each search term hit using a different color. The colors used are the same ones used in dtSearch Desktop (Options > Preferences > Fonts and Colors).

### Allow display of documents that are not located in a virtual root folder

This box should not be checked unless for some reason it is impossible to create a virtual directory for the documents on your site. Please see the **Security** topic before changing this setting.

## Logging

---

dtSearch Web can log searches and document access to text files that you can use to generate reports. The log files are generated in CSV format, which you can import into Excel or most databases. The document access log will only log access to documents that have hits highlighted. dtSearch Web has no way to monitor access to documents that users open directly, without hit highlighting.

The location for the log file must be a folder that allows write access by the user account(s) that will be searching. Therefore, you may want to create a separate folder just for the log files.

To enable logging in dtSearch Web, check the **Log document access** or **Log searches** checkboxes in the **File** tab of the **Form Builder** dialog box.

This will set up the search form for default logging of search requests or document access. Each search form can have its own separate log settings.

You can also enable logging for a search form by directly editing the generated options file. Directly editing the file gives you access to low-level options such as the fields that will be included in the log.

The entries in the generated options file that control logging are:

```
<BR><HR><I>Log searches: </I>
<!-- $Begin LogSearches -->
1
<!-- $End -->
<BR><HR><I>Log document access: </I>
```

```
<!-- $Begin LogDocumentAccess -->
1
<!-- $End -->
<BR><HR><I>Document log name template: </I>
<!-- $Begin DocumentLogNameTemplate -->
c:\temp\dtSearchWebLogs\dtSearch Docs %%Year%%-
%%Month%%.log
<!-- $End -->
<BR><HR><I>Document log item template: </I>
<!-- $Begin DocumentLogItemTemplate -->
%%DateTime%%, "%REMOTE_USER%", "%REMOTE_ADDR%",
"%DocName%", "%Result%"
<!-- $End -->
<BR><HR><I>Search log name template: </I>
<!-- $Begin SearchLogNameTemplate -->
c:\temp\dtSearchWebLogs\dtSearch Search %%Year%%-
%%Month%%.log
<!-- $End -->
<BR><HR><I>Search log item template: </I>
<!-- $Begin SearchLogItemTemplate -->
%%DateTime%%, "%REMOTE_USER%", "%REMOTE_ADDR%",
"%SearchRequest%", "%SearchIndex%", "%DocCount%",
"%Result%"
<!-- $End -->
```





# Portable Media Publishing

## Publishing (Overview)

---

dtSearch Publish provides an easy way to publish documents on a CD, DVD, or other portable media, using a browser-based user interface so users can access the content as they would access a web site. dtSearch Publish uses the same search components and templates as dtSearch Web, so the search forms and customization options look exactly the same as for dtSearch Web running on a web server.

*Note: a dtSearch Publish distribution license is required before media containing dtSearch components can be distributed to users.*

Some advantages of a browser-based user interface are: it provides high-quality display of HTML files, so web sites will appear just as they do on the original site; it can be customized simply by changing some HTML files; it is easy for customers to use; and no software has to be installed on the user's hard disk to access the content.

As with dtSearch Web, PDF and HTML files are displayed exactly as they would appear in a web browser, but with hits highlighted. Other file types are converted to HTML with hits highlighted for display in the browser. To use a CD or other media created with the CD Wizard, the user needs to have Windows XP or newer and, for viewing PDF files, Adobe Reader. To enable hit highlighting in PDF files, the user will need a compatible PDF viewer and may need a plug-in. For more information, please see "PDF viewers that support highlighting hits".

Note: While this manual refers to publishing to "CD", the content can be located on any type of media that is accessible through the file system, including DVDs, flash drives, USB drives, internal drives, etc.

For step-by-step instructions to create a CD from your documents, see Using the CD Wizard .

For detailed technical information about how the CD software works, see:

- CD Types

- Standard CDs

- Local HTTP Server CDs

## Using the CD Wizard

---

The CD Wizard helps you to create one or more CD master folders. Each folder contains a set of documents, software, and dtSearch indexes that is ready to be transferred to a CD. You can create any number of CD master folders, and each folder can contain any number of document folders and indexes.

### Creating a CD

To create a CD master folder,

**1. Install the dtSearch Publish program files on your computer.**

If you have dtSearch Web on CD, run the setup program to install. If you downloaded dtSearch Web from the internet, follow the download instructions to open the dtSearch Web archive and install the files.

**2. Start the dtSearch CD Wizard**

In dtSearch, click **dtSearch CD Wizard...** in the **File** menu.

**3. Make a new CD master folder**

Click **New CD...** to make a new CD master folder, enter the name of the folder for the CD contents, and click **OK**.

**4. Add documents to the CD**

Click **Add Documents...** to add documents to the folder. The **Add Documents** dialog box will appear. When the CD master folder is set up, a root\data folder will be created where the documents should be stored. To add documents to the CD, you can copy them into this folder using Windows Explorer, or you can use the **Add Folder...** button to have the CD Wizard do this automatically. When you click **OK** after selecting a folder to add, all of the documents in the folder will be copied into the CD master folder.

**5. Create an index for the documents**

Click **Create Index...** to create an index for the documents. You can create any number of indexes on each CD (just click **Create Index...** for each one). The process of creating and updating an index works exactly as it does in dtSearch Desktop.

**6. Build a search form**

Click the **Build Search Form...** button to build a search form to use with your site. You can make as many search forms as you want for each site.

After the search form is built, dtSearch Web will open it in your browser so you can try out a search. Once you have a basic search form working, you click **Build Search Form** again to customize the search form, the appearance of search results, and other options, and to create additional search forms.

**7. Make a "home" page for the CD**

The home page is the first page that users will see when they insert the CD. The home page is named `index.html` and is located in the root\data subfolder of the CD master folder.

Once the CD is done, transfer the contents of the CD master folder to a CD. Copy the contents of the CD master folder, but not the CD master folder itself. For example, if the CD master folder is `C:\CDMaster`, there should not be a folder named `CDMaster` on the CD, but everything in `C:\CDMaster` should be copied to the CD. (This way the `autorun.inf` file that the CD Wizard creates will be in the root folder of the CD.)

**Modifying a CD**

To add more documents, click **Add Documents...** and copy additional folders to the CD. After you have added documents click **Update Index...** to add the new documents to your indexes.

For information on changing the CD type, see **CD Types**.

## Deleting a CD

To delete a CD master folder, just delete the folder in Windows Explorer. The CD Wizard will detect that the folder is gone the next time it runs and will remove it from the drop-down list of CD master folders.

## "Recognizing" a CD

To access a CD master folder that the CD Wizard does not list (for example, if the CD master folder was copied from another computer), click **Recognize CD** and browse to the CD master folder. The CD master folder will be added to the list in the CD wizard.

## CD types

---

dtSearch Publish can generate two types of CDs:

- (1) "Standard" CDs that use the dtSearch Publish viewer, lbview.exe, to view content on the CD.
- (2) "Local HTTP Server" CDs that use Internet Explorer to view content on the CD, and use a localhost-only HTTP server to enable Internet Explorer to access the CD.

For most applications, the "Standard" CD type is recommended.

To change the type of a CD that you have already set up, click **Change CD Settings...** and select one of the CD types.

## Standard CDs

---

A Standard CD uses a viewer program, lbview.exe, to view content on the CD. Web pages and search forms appear exactly as they would in Internet Explorer, and all search functions work as they would on a web site, including any JavaScript embedded in search forms.

Because no HTTP server is needed, the CD is not affected by firewall software such as Zone Alarm, Norton Internet Security, and the Windows Firewall.

## CD Layout

The top-level folder of the CD will contain these files:

autorun.inf	Specifies the program to start when the CD is inserted
cdrun.exe	The program launched when the CD is inserted, as specified in autorun.inf
cdrun.xml	Options specifying what cdrun.exe should do when it starts

Below this folder will be a **root** folder with two sub-folders:

- **data**, which has documents, indexes, and the search forms, and
- **cgi-bin**, which has the search program and any other executable content that you add to the CD.

The root\data folder will be equivalent to the / folder on a web site, so /something.html would be found in root\data\something.html

The root\cgi-bin folder will be equivalent to the /cgi-bin folder on a web site, and can hold any CGI programs for the web site.

## Startup

The startup sequence when a CD is inserted into a user's CD drive is as follows.

1. Windows opens the autorun.inf file to get the program to launch, which is cdrun.exe.
2. cdrun.exe starts and checks that the components listed in the dependencies section of cdrun.xml are present. If any components are missing, cdrun.exe will display a warning message (as specified in cdrun.xml) and exit.
3. cdrun.exe launches lbview.exe, the browser that accesses the CD.
4. lbview.exe starts and checks the lbview.ini file for the recommended Internet Explorer and Adobe Reader versions. If either product is older than the recommended version, the user will be prompted to download the latest version from the Microsoft or Adobe web site.
5. lbview.exe opens the home page for the CD, root\data\index.html
6. If the user clicks the search icon in the browser, the search page for the CD will open, root\data\dtsearch.html

## System Requirements

*Windows version:* Windows XP SP 3 or later.

*Internet Explorer version:* Internet Explorer 6 or later is required to enable hit navigation and hit highlighting to work.

*Adobe Reader version:* A PDF viewer that supports highlighting hits is required or PDF files will appear without hit highlighting. For information on PDF viewers that support hit highlighting, please see PDF viewers that support highlighting hits.

## Error Pages

The root\data\builtin folder on the CD contains these pages that are displayed in lbview.exe when an error occurs.

GetNewIE.html	Appears at startup when the Internet Explorer version is older than what is specified in lbview.ini as the minimum recommended Internet Explorer version. This page contains a link that the user can click to suppress the page from appearing the next time the CD starts.
---------------	--

GetAdobe.html	Appears at startup when the Adobe Reader version is older than what is specified in lbview.ini as the minimum recommended version. This page contains a link that the user can click to suppress the page from appearing the next time the CD starts.
GetPlugin.html	Appears at startup when an Adobe Reader plug-in is needed to highlight hits in PDF files. This page contains a link that the user can click to suppress the page from appearing the next time the CD starts.
Error.html	Appears when any other browsing error occurs, such as a broken link leading to a "page not found" error.

## lbview.ini Settings

The following settings in lbview.ini can be used to control the behavior of lbview.exe

### **HomePage=/index.html**

Specifies the first page that opens when the CD starts.

### **SearchPage=/dtSearch.html**

Specifies the page that opens when the user clicks the search button.

### **WebLinksInBrowser=1**

Specifies whether external links should open in the user's web browser or in the lbview.exe program. For example, suppose a page on your CD contains a link to <http://www.microsoft.com>. If WebLinksInBrowser is set to 1, when this link is clicked the user's web browser will open over the lbview.exe program. If WebLinksInBrowser is set to 0, the link will open in the lbview.exe program.

### **ExternalLaunchExtensions=xls;doc;ppt;wpd;docx;pptx;xlsx;rtf**

List extensions to launch outside of the lbview.exe program. This enables you to create links in the CD to Word or other Office documents and have them open in their application when the user clicks a link.

### **CopyFileExtensions=zip**

List extensions to copy instead of opening when clicked. These extensions can be used to create links to automatically copy certain files from the CD.

### **MinimumAdobeReaderVersion=6**

Specifies the minimum version of Adobe Reader (or Adobe Acrobat) recommended to use with this CD. If an older version is present, or if Adobe Reader is not installed, the user will be prompted to get Adobe Reader from the Adobe web site. If your CD will not contain PDF files, you can set this to 0 (zero).

### **GetAdobeReaderPage=/builtin/GetAdobe.html**

The page to display when a newer version of Adobe Reader is needed.

### **MinimumIEVersion=5**

The minimum version of Internet Explorer recommended to use with this CD. If an older version is present, the user will be prompted to upgrade.

**GetNewIEPage=/builtin/GetNewIE.html**

The page to display when a newer version of Internet Explorer is needed.

**MinimumPdfPluginVersion=1**

The minimum version the dtSearch PDF Search Highlighter Plug-in for Adobe Reader that is needed to highlight hits. Set to zero to suppress prompts to download the plug-in.

**GetPdfPluginPage=/builtin/GetPlugin.html**

The page to display when the dtSearch PDF Search Highlighter Plug-in for Adobe Reader is not installed.

**EnablePdfHighlightMessage=Would you like to enable hit highlighting for PDF files (currently disabled in Adobe Reader or Adobe Acrobat)?****SilentEnablePdfHighlighting=1**

If PDF hit highlighting is disabled in Adobe Reader 9 or Adobe Acrobat 9, the lbview.exe program can change this setting to enable hit highlighting before opening a PDF file. You can use EnablePdfHighlightMessage to ask permission to make this change, or set SilentEnablePdfHighlighting to have lbview.exe make the change without asking permission.

The option to disable hit highlighting is present starting in Adobe Reader and Adobe Acrobat 9.0, in the Preferences > Search settings ("Enable search highlights from external highlight server").

**Launching Programs from the Viewer**

Standard CDs support a special URL format that lets you launch a program from a link in a page on the CD. To create a link that launches a program,

- (1) Put the program in the root/cgi-bin folder under the CD master folder.
- (2) Create a link on a page as follows:

```
<a href="cmd://launch/YourProgramName.exe">Click here to launch
  the program</a>
```

The lbview.exe viewer will execute the program YourProgramName.exe in root/cgi-bin when this link is clicked.

**Using Tabs**

You can make a link open in a different tab using the *target* attribute in the link tag, like this:

```
<a href="othertab.html" target="_new">click here</a>
```

A user can close a tab by clicking the X icon, or you can create a link to close a tab by using javascript:window.close(), like this:

```
<a href="javascript:window.close();">click here to close this
  tab</a>
```

Internet Explorer normally pops up a warning message when a script attempts to close a window. To prevent this, lbview.exe watches for the exact sequence "javascript:window.close();" and closes the current tab silently when this occurs in a link.

## Local HTTP Server CDs

---

The default and recommended type of CD to use with dtSearch Publish is the Standard type.

A Local Server CD uses an HTTP server to provide the browser interface. When the CD is inserted, the local HTTP server starts, and Internet Explorer is launched to open the home page for the CD.

This type of CD has a significant disadvantage: the HTTP server may trigger warning messages, or may be blocked, by firewall software. For the CD to work, the firewall software has to be configured to allow the HTTP server to "access the internet". The local HTTP server does not really access anything outside of the local machine, but because it communicates with the web browser using HTTP, some firewall software treats it as if it were accessing the internet. The Windows Firewall may pop up a warning message when the local HTTP server starts.

For Local HTTP Server CDs, you can use either the HTTP server that comes with dtSearch Publish, `dts_svr.exe`, or another product, Microweb.

### Startup

When the CD is inserted, the `autorun.inf` file on the CD will start the `cdrun.exe` program on the CD. The `cdrun.exe` program will then do the following:

- (1) Check the `cdrun.xml` file to get configuration settings
- (2) Check that the computer has any required dependencies. These are listed in the `cdrun.xml` file. If a dependency is not present, the file in `browserError.html` is launched to prompt the user to get a newer browser version.
- (3) Start the HTTP server and then launch the home page for the CD (`index.html`) in the user's web browser. When the browser is closed, the HTTP server will stop automatically.

### CD Layout

Assuming that a CD master folder is created in `c:\sample`, the following sub-folders will be created when the CD Wizard sets up the CD:

Folder	Contents
<code>c:\sample\root\cgi-bin</code>	dtSearch Web program files
<code>c:\sample\root\data</code>	Documents and indexes

### System Requirements

*Windows version:* Windows XP SP 3 or later.

*Internet Explorer version:* Internet Explorer 6 or later is required to enable hit navigation and hit highlighting to work.

*Adobe Reader version:* A PDF viewer that supports highlighting hits is required or PDF files will appear without hit highlighting. For information on PDF viewers that support hit highlighting, please see PDF viewers that support highlighting hits.

**Firewalls:** If the system has a firewall installed, the program `dts_svr.exe` on the CD may have to be given permission to access the internet.

## HTTP Server

The HTTP server is `dts_svr.exe`, a localhost-only HTTP server that runs on a unique port number, so it will not interfere with any other HTTP servers that may be running on the computer when the CD is inserted. A configuration file, `dts_svr.ini`, has option settings to control the behavior of the HTTP server (for example, to specify the browser to open when the CD starts). Documentation on these options is included in the `dts_svr.ini` file.

dtSearch Web interfaces with the HTTP server using the `dtcgi2is.exe` utility, which the CD Wizard sets up along with dtSearch Web. `dtcgi2is.exe` translates dtSearch Web's ISAPI interface into a CGI interface, so dtSearch Web can be run as a CGI program. `dtcgi2is.exe` maps virtual directories to local directories for dtSearch Web using the root folder provided in an XML configuration file, `dtcgi2is.xml`.

## Dependencies

If your content requires a current browser version, plug-ins, or other software that must be installed, you can use the Dependencies entries in the `cdrun.xml` file to have your CD install these as needed.

## Software dependencies

---

If your content requires a specific browser version, plug-ins, or other software that must be installed, you can use the Dependencies entries in the `cdrun.xml` file to have your CD install these as needed. Each dependency is numbered from 0 to 9 and contains the following information:

Component	A DLL that must be loaded successfully for the dependency to be satisfied. The wizard-generated <code>cdrun.xml</code> checks for the Winsock 2 DLL, <code>WS2_32.DLL</code> .
Message	A prompt that will be displayed if the component is missing. If <code>FileToLaunch</code> is not blank, the message must be a question asking the user for permission to install the software. If <code>FileToLaunch</code> is blank, the message should be an error message.
FileToLaunch	Program to execute if the component is missing (if blank, nothing will be launched). If the required software is on the CD, this should be the path to the executable, relative to the top folder on the CD.
ErrorPage	An HTML file to open if the dependency cannot be satisfied. This can contain links to a web site to download the required software.

Example 1. Displays a warning message if the Winsock 2 DLL is not installed.

```
<Dependency0>
  <Component>ws2_32.dll</Component>
  <Message>A newer version of Internet Explorer or Netscape is
  needed.</Message>
  <FileToLaunch></FileToLaunch>
  <ErrorPage>browserError.html</ErrorPage>
```



```
</Dependency0>
```

Example 2. Offers to install Internet Explorer if the Winsock 2 DLL is not installed. This example assumes that the CD will contain the Internet Explorer setup files in a folder named msie on the CD.

```
<Dependency0>
  <Component>ws2_32.dll</Component>
  <Message>A newer version of Internet Explorer is
  needed. Would you like to install Internet Explorer
  now?</Message>
  <FileToLaunch>msie\iesetup.exe</FileToLaunch>
  <ErrorPage>browserError.html</ErrorPage>
</Dependency0>
```

## cdrun.xml

---

The cdrun.xml configuration file controls the behavior of cdrun.exe, which is the program launched to view a CD created with dtSearch Publish. Each of the option settings in cdrun.xml is explained below.

```
<?xml version="1.0" encoding="UTF-8" ?>
<dtSearchCdSettings>
  <UseLocalBrowser>1</UseLocalBrowser>
  <ServerToLaunch>root\data\lbview.exe</ServerToLaunch>
  <Dependency0>
    <Component>ws2_32.dll</Component>
    <Message>A newer version of Internet Explorer or Netscape
    is needed.</Message>
    <FileToLaunch></FileToLaunch>
    <ErrorPage>apache\browserError.html</ErrorPage>
  </Dependency0>
</dtSearchCdSettings>
```

### ServerToLaunch

To start the HTTP web server from the CD, cdrun executes the dts\_svr.exe program. dts\_svr.exe then launches the browser with the start page for the CD (default.html or index.html). dts\_svr.exe will automatically close when the user closes the browser window. If UseMicroweb is true (see below) then ServerToLaunch should be set to root\data\microweb.exe

### UseDefaultServer

### UseMicroweb

### UseLocalBrowser

Specifies the interface type for the CD.

### Dependencyo

Up to 10 dependencies, numbered from 0 to 9, can be included in a cdrun.xml file, specifying components or programs that must be installed for the CD to work. See "Software Dependencies" for information on the contents of this section.